

JETMASTER[®]

PHOTO PANEL

Search *JetMaster Systems* on YouTube to watch the video

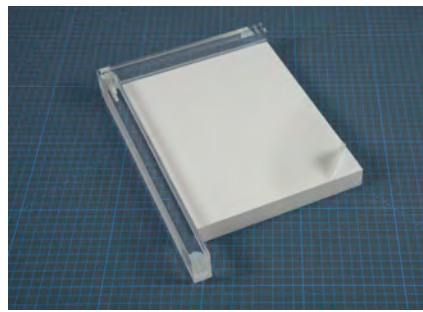
Print - Stick - Display

Assembly Instructions

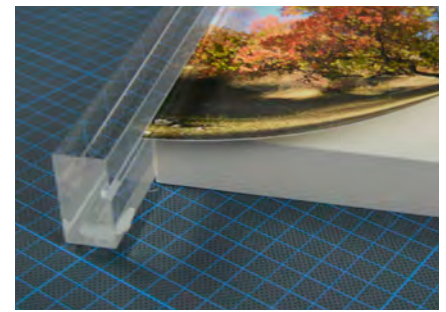
To get the best results print your image to the size specified in the print size column of the table on the previous page. Experiment with a range of finishes on the face of your photo panel by printing your image on different medias.



Step 1:
Peel back a small section of the release liner.



Step 2:
Place the photo panel into the alignment frame and fold back part of the release liner



Step 3:
Position your image using the alignment frame.



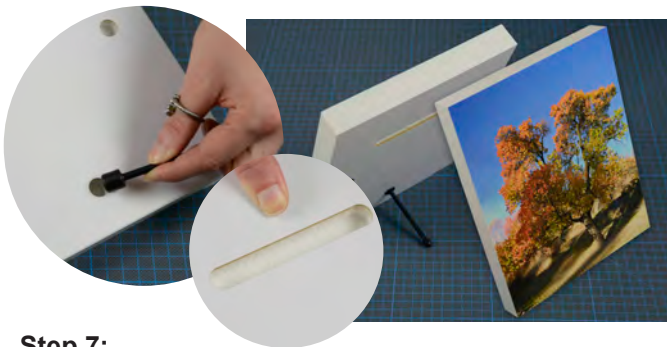
Step 4:
Secure a corner of your print using the area of adhesive you exposed earlier



Step 5:
Remove the rest of the release liner and apply even pressure using a roller.



Step 6:
Place your photo panel face down on a cutting mat and use a rotary cutter or craft knife to remove the excess paper from the edges.



Step 7:
Insert the desk stand into one of the pre drilled holes on smaller frames or use the slits on the back of larger frames to display your finished photo panel



JetMaster Photo Panel Tools

Cutting Mats, Alignment Tools and Rollers are all available from JetMaster Display Systems, contact us for further details. Rotary Cutters and Craft Knives are available separately.

www.innovaart.com

+44 (0) 1992 571775 | info@innovaart.com | +1 856-456-3200