

Art Cards 220gsm

Fine Art Range

Step 1:

Download the Photoshop templates from www.innovaart.com/product/art-cards. Alternatively create a new document using the flat page dimensions listed below.

Step 2:

If using the downloaded template turn off or delete the layers with the Innova logos on them - these are on the 'back' of the card.

Switch on the grid View>Show>Grid (View>Grid in some versions of Photoshop), this will help with alignment later on.

Step 3:

Use File>Place to import your desired image file by navigating to where you have saved your image and clicking place.

Step 4:

Use Edit>Transform>Rotate 90° CCW (or Image>Rotate>Layer Left in some versions of Photoshop) to orientate a portrait image with the right hand side of the document. This will be your bottom edge.

If you are using a landscape format image and would like to have a horizontal card use Edit>Transform>Rotate 180° (Image>Rotate>Layer 180° in some versions of Photoshop) to orientate the bottom of your image with the top of the document. This will be your bottom edge.


Step 5:

Use the 'handles' at the corners of your image to roughly size it to the appropriate dimensions. Remember to hold down the shift key on your keyboard to size the whole image proportionately and to resize to the whole image slightly larger than the final required size to compensate for border edits.

Drag your image so that the focal point of your image roughly lines up with the centre of the front of your card.

Press enter to secure your changes to the imported image.

Step 6:

To get an equal border around your image use the select the rectangular marquee tool ()

To get a border of 5mm on all sides set the Mode (in some versions of Photoshop this is called Style) drop down menu to fixed size. You can find this in the top tool bar.

For small cards set the dimensions to Width: 137.6mm Height: 104.3mm.

For large cards set the dimensions to Width: 177.3mm Height: 129.7mm.

Click on your image once to place the marquee then move the marquee to align with the grid and get an equal border.

Right click and select Layer via Copy.

Step 7:

You will now have your original image on one layer and a layer above called layer 1.

Switch off the layer containing your original image.

You can also turn off the grid using View>Show>Grid (or View>Grid), this will give you a clearer view of your final artwork.

Step 8:

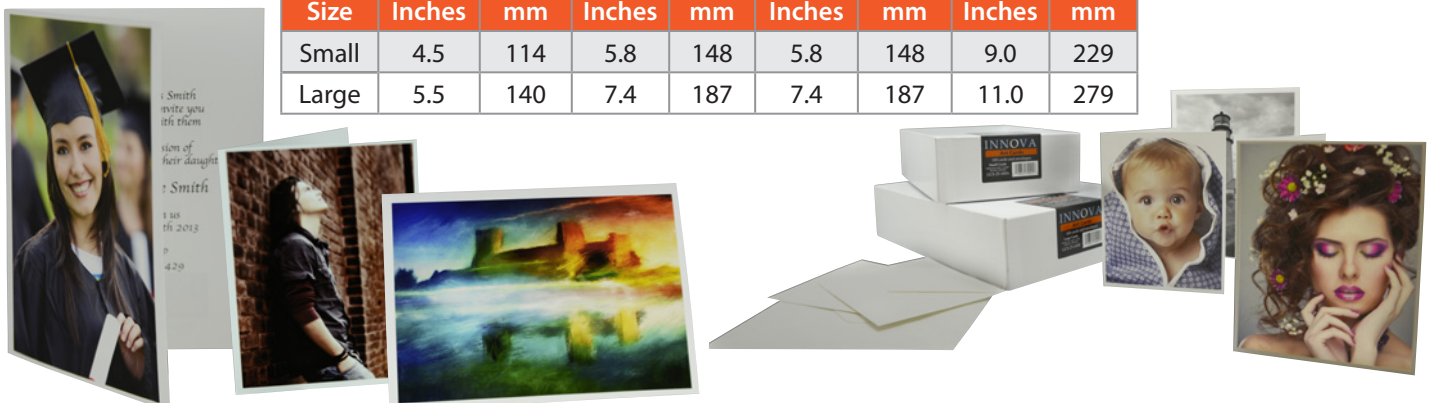
Add any additional required details to the back of the card you could use the layers containing the Innova logo as a guide.

Save your file, you are now ready to print.

Additional notes:

- To print the inside of the card you will need to set up an additional file and print this separately. Practice with scrap paper first to make sure you are loading the paper correctly.
- ICC profiles are available from www.innovaart.com
- To print your card you will need to set up a custom page size using the dimensions below.

| Size | Folded Card Dimensions | | | | Flat Page Dimensions | | | |
|-------|------------------------|-----|--------|-----|----------------------|-----|--------|-----|
| | Width | | Length | | Width | | Length | |
| | Inches | mm | Inches | mm | Inches | mm | Inches | mm |
| Small | 4.5 | 114 | 5.8 | 148 | 5.8 | 148 | 9.0 | 229 |
| Large | 5.5 | 140 | 7.4 | 187 | 7.4 | 187 | 11.0 | 279 |



Art Cards 220gsm Fine Art Range

Canon Printer Set-Up:

Select **File > Print** to bring up the Print Settings box.

Step 1:

Click on the **Print Settings** tab.

Step 2:

Under the **Page Setup** tab, click on the Page size drop down menu and select **> Custom**.

Step 3:

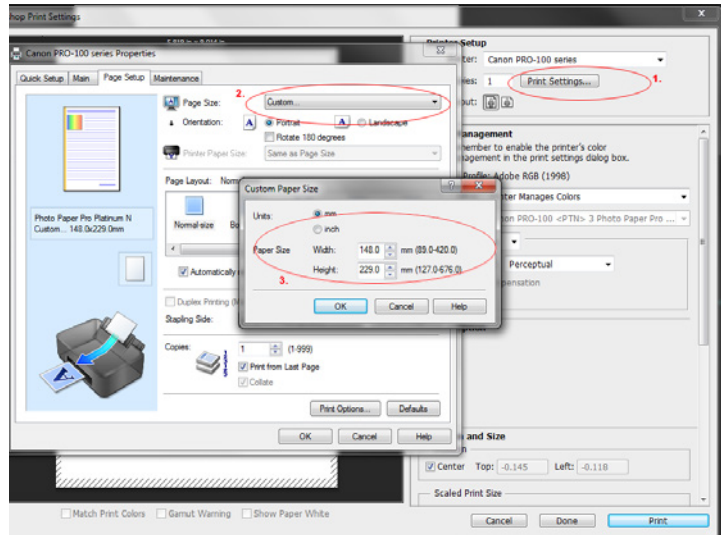
Enter the **flat** page size for either the small or large card > click **OK** to save.

Step 4:

You should then see your image fill the entire paper surface in the preview on the left hand side.

Step 5:

Select your colour management preferences as usual using **ICC profiles** from www.innovaart.com, or using generic media settings with **'Printer manages colour'**.



Epson Printer Set-Up:

Select **File > Print** to bring up the Print Settings box.

Step 1:

Click on the **Print Settings** tab.

Step 2:

Under the **Main** tab > Paper Settings section, click on the size drop down menu and select **> User Defined**.

Step 3:

Enter the **flat** page size for either the small or large card.

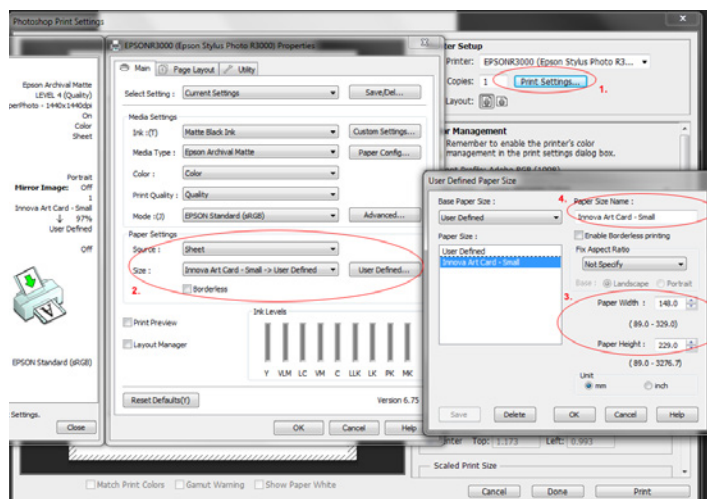
Step 4:

Name your user defined paper size, and click **OK** to save.

Step 5:

You should then see your image fill the entire paper surface in the preview on the left hand side.

Step 6: Select your colour management preferences as usual using **ICC profiles** from www.innovaart.com, or using generic media settings with **'Printer manages colour'**.



Additional notes:

- Feed the cards into your printer one at a time.
- Load the cards with the crease facing inwards to allow the card to fold correctly.

